



ROOM DESCRIPTION



ROOMS AT SENDA

Our Suites and Rooms are dotted across the property in contemporary mountain bungalows. All Suites and Rooms are private and do not directly connect with one another. Some sit on hilltops with incredible views all the way to the Pacific, while others have amazing windows into the cloud forests.

4 ROOM CATEGORIES / 28 UNITS:

*Following Municipality standards, we will only have 24 rooms available.

- » Senda Suites x 2 units
- » Premium Suites x 8 units
- » Junior Suites x 10 units
- » Superior Rooms x 8 units





SOFT OPENING RATES:
(15 NOV - 15 DEC)

- » Senda Suites \$190
- » Premium Suites \$150
- » Junior Suites \$100
- » Superior Rooms \$80

- Rates per room (double occupancy)
- Extra guest (12 years +) \$50 per night
- Children 11 and under are complimentary
- Breakfast included

SENDA SUITES

- » Very spacious suites with privacy for each sleeping area
- » Two separate bedrooms
- » Bedding arrangement:
 - One king sized bed
 - Two twin beds that can be turned into a king sized bed
 - Living room sofa bed can be turned into a twin bed and an extra twin bed can be added
- » Living room with day bed, table and chairs and mini bar area
- » Ample shared covered terrace
- » Two full private bathrooms (comfortable but small)
- » Sleeps up to 6 comfortably (4 adults and 2 children)



HIGH SEASON

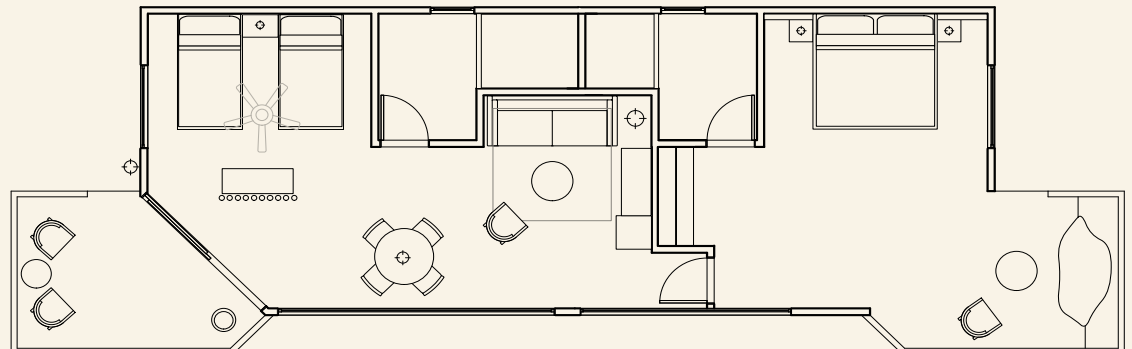
1 NOV – 30 APRIL: \$450

HOLIDAY SEASON

20 DEC – 5 JAN: \$540

GREEN SEASON

1 MAY – 31 OCT: \$360





PREMIUM SUITES

- » Very spacious open plan bedroom and living space
- » Most suitable for couples or 2 adults and a small child
- » Bedding arrangement:
 - One king sized bed
 - One twin sized day bed
- » Living room with day bed, table and chairs and mini bar area
- » Small shared covered terrace
- » One full private bathroom
- » An extra bed can be added if necessary in place of either the table or the sofa
- » 2 non-connecting, private Premium Suites per bungalow

HIGH SEASON

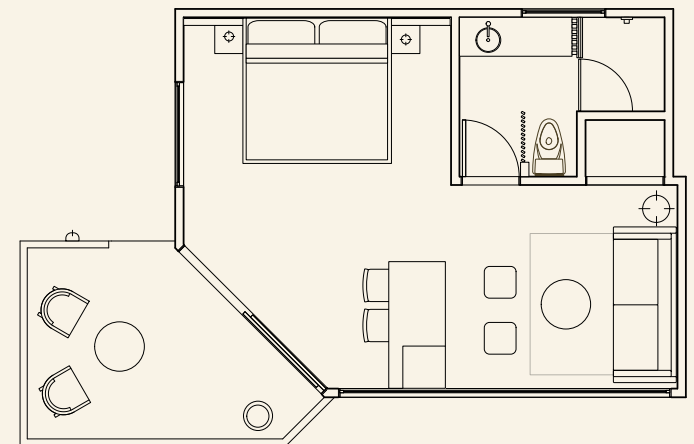
1 NOV – 30 APRIL: \$390

HOLIDAY SEASON

20 DEC – 5 JAN: \$480

GREEN SEASON

1 MAY – 31 OCT: \$310





JUNIOR SUITES

- » Spacious suite, suitable for couples or 2 adults and a small child (or 2)
- » Private bedroom
- » Bedding arrangement:
 - One king sized bed or two twins
 - One twin sized day bed in living room
- » Living room with day bed, table and chairs and mini bar area
- » Small shared covered terrace
- » One full private bathroom
- » A small crib can be added upon request
- » 2 non-connecting, private Junior Suites per bungalow

HIGH SEASON

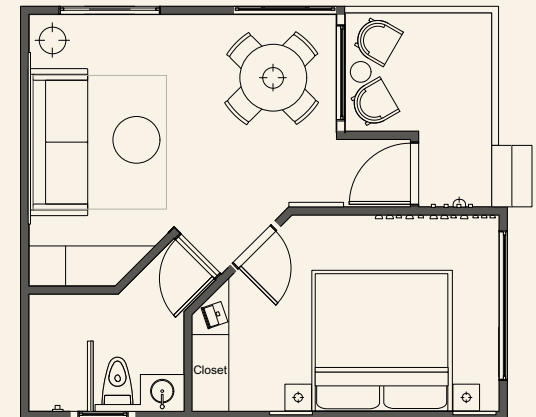
1 NOV - 30 APRIL: \$330

HOLIDAY SEASON

20 DEC - 5 JAN: \$430

GREEN SEASON

1 MAY - 31 OCT: \$260





SUPERIOR ROOMS

- » A more compact room suitable for couples or 2 adults
- » Bedding arrangement:
 - One king size bed
 - Living room with sofa, table and chairs and mini bar area
- » One full private bathroom
- » Small shared terrace
- » 2 non-connecting, private Superior Rooms per bungalow

HIGH SEASON

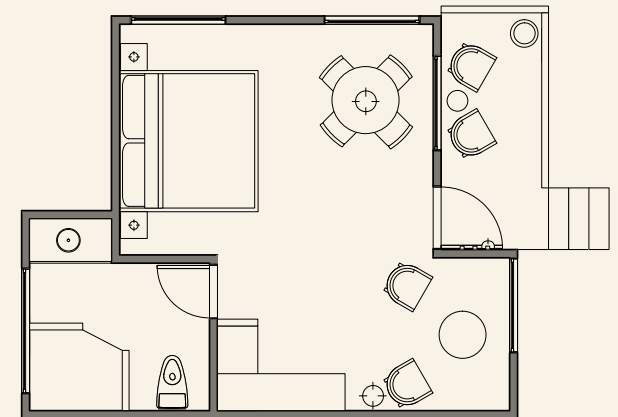
1 NOV - 30 APRIL: \$280

HOLIDAY SEASON

20 DEC - 5 JAN: \$380

GREEN SEASON

1 MAY - 31 OCT: \$220





CAYUGA
COLLECTION



● SENDA SUITES ● PREMIUM SUITES ● JUNIOR SUITES ● SUPERIOR ROOMS